



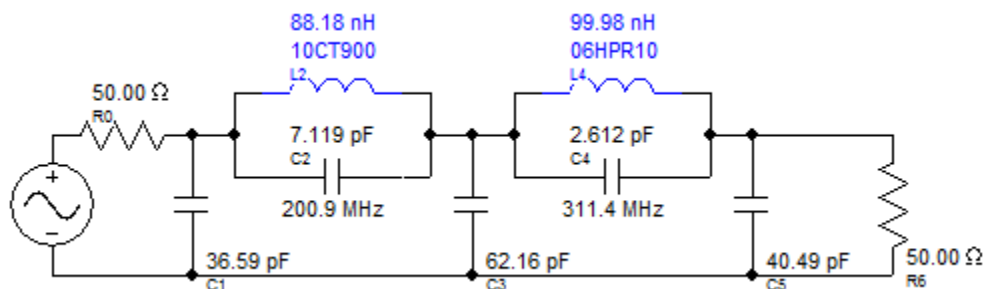
## The Use of Vendor Supplied S-Parameters in FilterSolutions®

Recent editions of FilterSolutions from Nuhertz Technologies incorporate the ability to import and use s-parameter data from component vendors.

A tutorial video, available from Nuhertz, demonstrates the feature with the use of Inductor S-Parameters supplied by Coilcraft (Coilcraft, Inc.; Cary, IL). (Files are available at <http://www.coilcraft.com/models.cfm>.)

Lumped element filters can be synthesized using actual vendor supplied component data. S-Parameter models for Spiral Inductors can also be incorporated. Users can download any favorite vendor's S-Parameter files to their Nuhertz program directory. FilterSolutions will select the closest nearest S-Parameter file equivalent to the synthesized circuit value predicted by FilterSolutions.

FilterSolutions designs, using vendor S-Parameter values, may be exported directly to NI-AWR or CST programs for embedded use in broader project applications.



For further information please visit: [www.nuhertz.com](http://www.nuhertz.com), or call:(973) 228-7800.

+1 602-279-2448 (Voice) • [www.nuhertz.com](http://www.nuhertz.com) • [hq2@nuhertz.com](mailto:hq2@nuhertz.com)